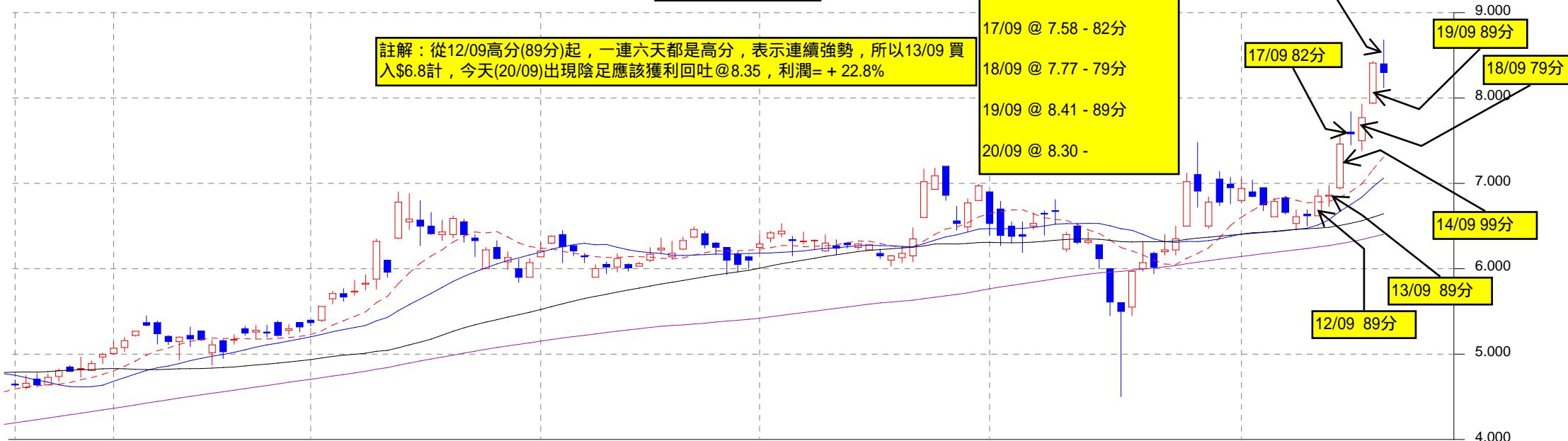


20/09/2007 Op:8.400 Hi : 8.680 Lo : 8.120 Cl : 8.300

Sample 5 - 買賣實例

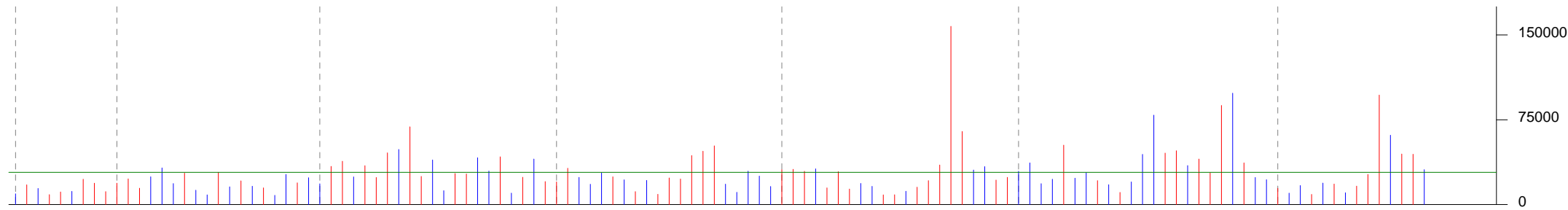
註解：從12/09高分(89分)起，一連六天都是高分，表示連續強勢，所以13/09買入\$6.8計，今天(20/09)出現陰足應該獲利回吐@8.35，利潤= + 22.8%

- 12/09 @ 6.85 - 89分
- 13/09 @ 6.86 - 89分
- 14/09 @ 7.46 - 99分
- 17/09 @ 7.58 - 82分
- 18/09 @ 7.77 - 79分
- 19/09 @ 8.41 - 89分
- 20/09 @ 8.30 -

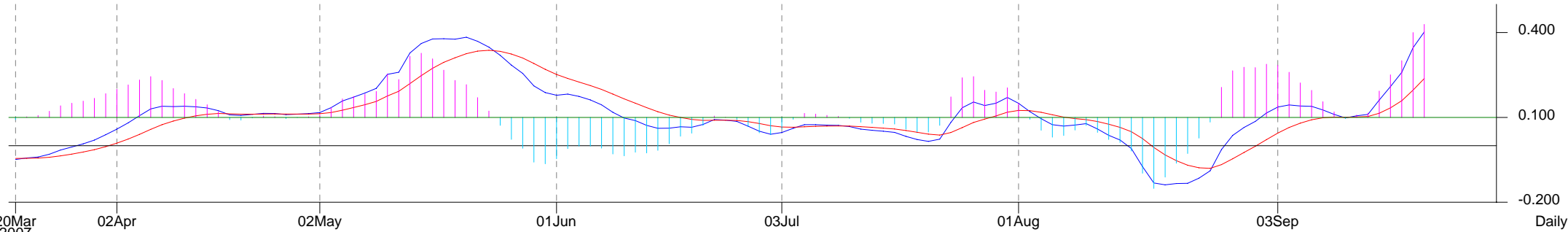


Vol : 30,862,176 Avg : 28,507,612

(K)



MACD1 : 0.402 MACD2 : 0.237 Diff : 0.165 12&26/9 MACD



20Mar 2007 02Apr 02May 01Jun 03Jul 01Aug 03Sep Daily